

QUOTATION FORM



Please fill out this form so we may provide an accurate quotation for your container home including costs for customisation, optional extras & transport cost estimates. We will not sell, lease or distribute your personal information to any third party individual or company.

1. PERSONAL DETAIL

Full Name	
Mailing Address	
Home Phone	
Mobile Phone	
Email Address	

2. DELIVERY SITE

Please provide the address or suburb for deployment of your container home. This will assist in obtaining container home transportation mode and freight estimates.

Prospective Site Address	
--------------------------	--

3. CONTAINER HOME MODEL

Please choose which container home size and room options will form the basis of your quotation.

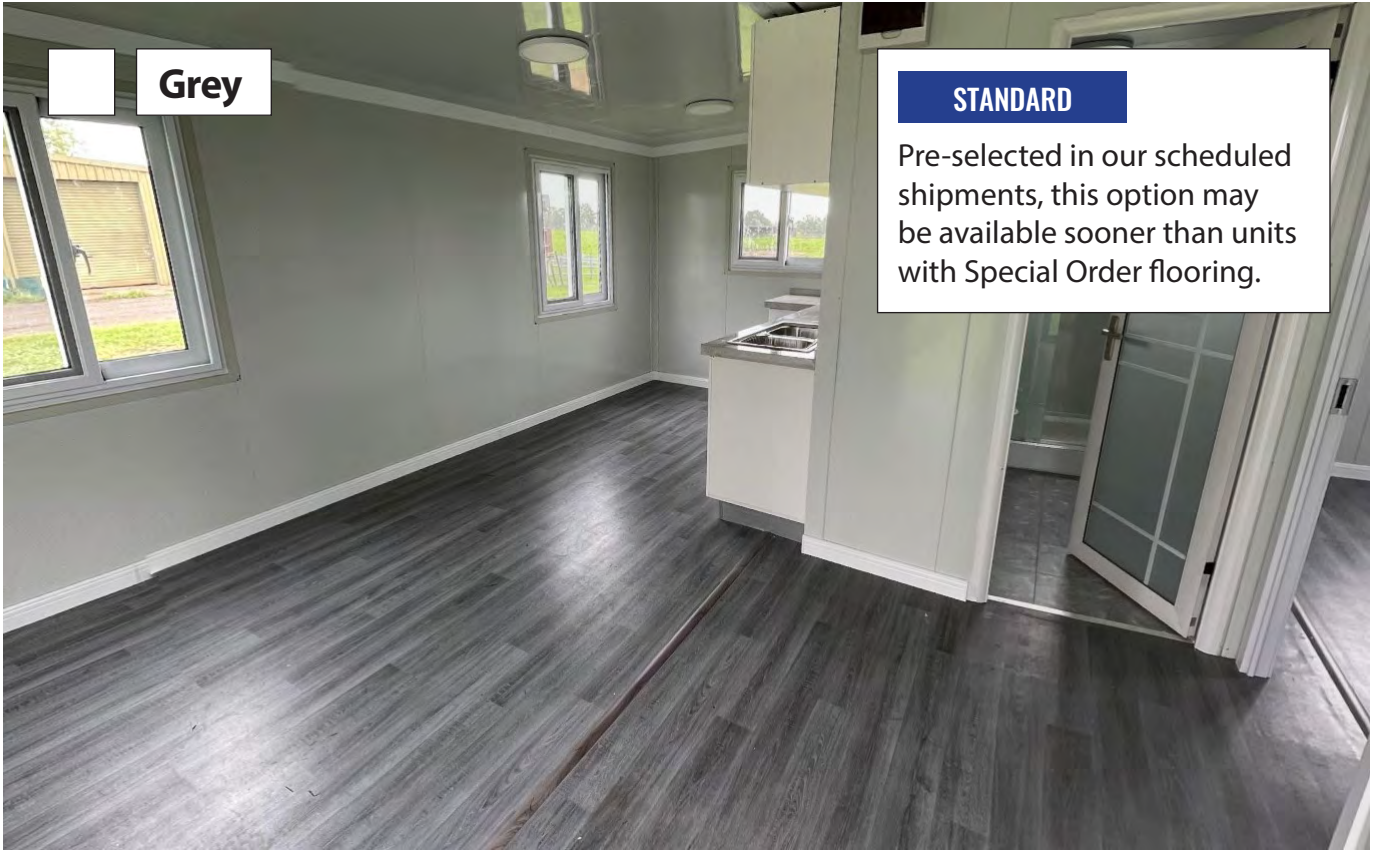
Then, choose a bedroom layout option based on your container home size option selected above. Each container home features a kitchen and bathroom as standard.

Mark the relevant option with a check or cross.

<input type="checkbox"/> VIOLET20 20ft Container Home 36m ² approx area (empty) 5.85m x 6.28m (L x W)	<input type="checkbox"/> VIOLET30 30ft Container Home 54m ² approx area (empty) 9.00m x 6.28m (L x W)	<input type="checkbox"/> VIOLET40 40ft Container Home 72m ² approx area (empty) 11.80m x 6.28m (L x W)
<input type="checkbox"/> 1 Bedroom Layout	<input type="checkbox"/> 2 Bedroom Layout	<input type="checkbox"/> 3 Bedroom Layout
<input type="checkbox"/> 2 Bedroom Layout	<input type="checkbox"/> 3 Bedroom Layout	<input type="checkbox"/> +3 Bedroom Layout

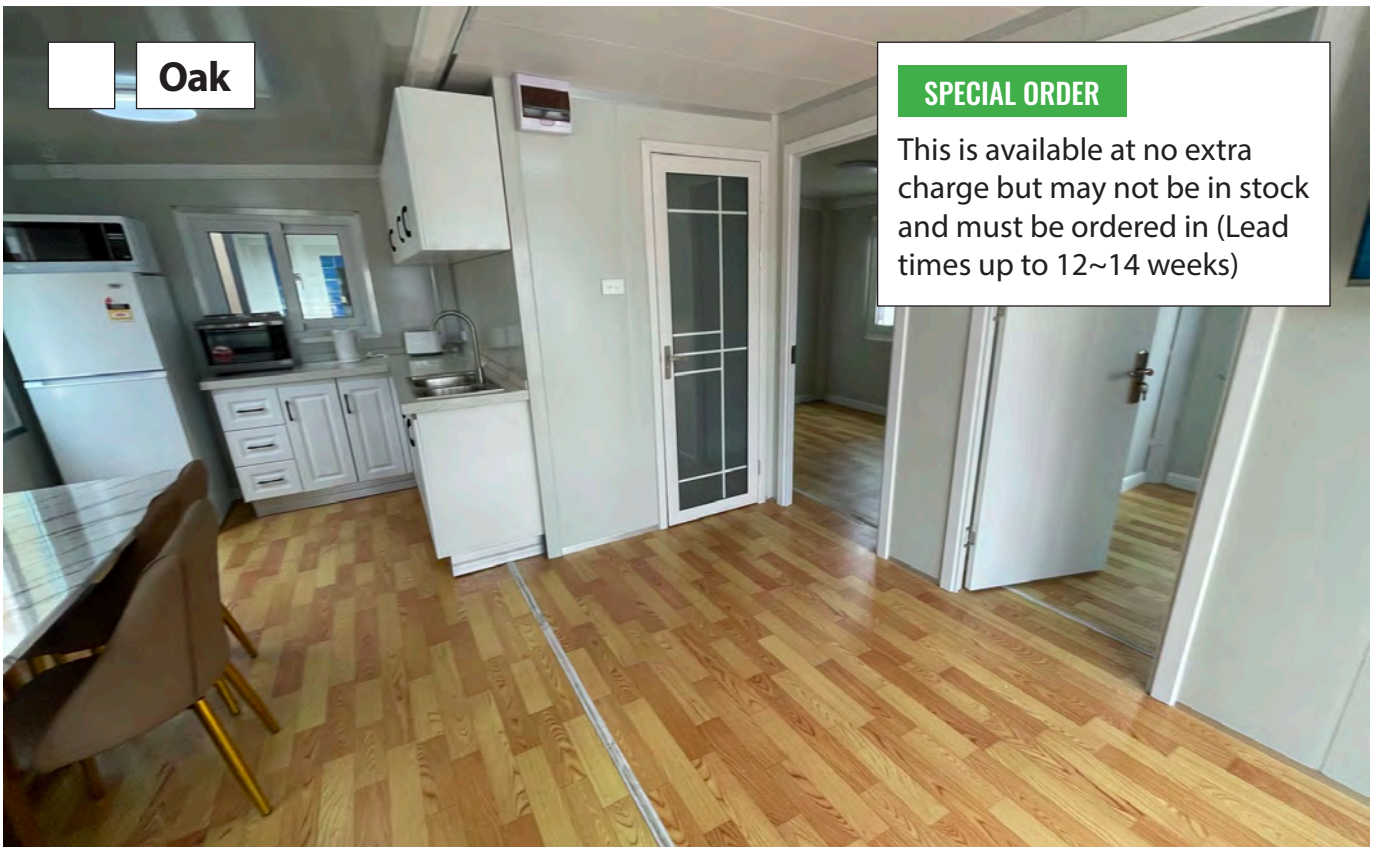
4. FLOORING

Container homes come with pre-laid PVC flooring included in the cost of the container unit. No installation is required.



STANDARD

Pre-selected in our scheduled shipments, this option may be available sooner than units with Special Order flooring.



SPECIAL ORDER

This is available at no extra charge but may not be in stock and must be ordered in (Lead times up to 12~14 weeks)

5. OPTIONS

We can supply a range of options for your container home from air conditioning to solar systems for off-grid applications. Each is an optional extra and is not included in the standard price of the container home.

* We offer these as supply only, installation is not included. Items may be able to be shipped inside your container unit; for bulky items, extra shipping charges may apply.

AIR CONDITIONING

We offer fixed and portable air conditioners from leading brands. Larger sizes available by request.



2.5kW Split System Inverter Air Conditioner

- 2.5kW/3.0kW (Cool/Heat)
- WiFi and app control
- 6 year manufacturer warranty
- Larger models available
- * Install components not incl.



3.5kW Reverse Cycle Portable Air Conditioner

- 3.5kW/2.9kW (Cool/Heat)
- WiFi and app control
- DIY Installation
- Includes heat pipe and window outlet mount

HOT WATER

In gas (natural gas or LPG) and electric models, larger models available by request. Supply only.



Gas Continuous Flow Hot Water

- Natural gas or LPG models
- 20L/min or 26L min flow rate
- Preset to 50°C



20L Natural Gas



20L LPG



26L Natural Gas



26L LPG



Electric Hot Water Heater

- 160L hot water delivery
- 75°C maximum thermostat setting
- 3.6kW element size



160L



250L



315L

5. OPTIONS (CONTINUED)

We can supply a range of options for your container home from air conditioning to solar systems for off-grid applications. Each is an optional extra and is not included in the standard price of the container home.

* We offer these as supply only, installation is not included. Items may be able to be shipped inside your container unit; for bulky items, extra shipping charges may apply.

HOME APPLIANCES

We can supply washing machines, refrigerator, ovens, cooktops and rangehoods for you container home.



4-Burner Electric Stove & Oven

- 5 function 33A electric oven
- 80L oven capacity with enamel interior for easy cleaning
- 4 x EGO cooktop elements
- 500 x 600 x 900mm (WxDxH)



4-Burner Gas Stove & Oven

- 70L oven, 9 functions
- 150 ~ 250°C temp. range
- Manual timer, oven light
- 4 x Sabaf gas burners
- Flame failure protection
- 600 x 600 x 900mm (WxDxH)



60cm White Stove Rangehood

- 3-speed centrifugal fan
- Dishwasher-safe filters
- Room recirculation or option for ducting to exterior
- 3 x halogen lamps built-in
- 600 x 500 x 160mm (WxDxH)



5kg Front Loading Washing Machine

- 8 programs, quiet operation
- Overflow/balance/excessive foam detection safety features
- 595 x 470 x 850mm (WxDxH) fits into washer-basin



236L Refrigerator/Freezer

- 172L refrigerator / 67L freezer
- Frost free fridge/freezer
- Multiflow cool air distribution
- Reversible design door
- Electronic temp. control
- 545 x 623 x 1522mm (WxDxH)

5. OPTIONS (CONTINUED)

We can supply a range of options for your container home from air conditioning to solar systems for off-grid applications. Each is an optional extra and is not included in the standard price of the container home.

* We offer these as supply only, installation is not included. Items may be able to be shipped inside your container unit; for bulky items, extra shipping charges may apply.

WATER STORAGE

We can supply rigid water tanks in slimline or squat models, or pillow water tanks to lay flat.



Slimline Water Tanks

- Variety of capacities/colours
- Compact design
- Length x width x height below:

- 1,000L (2000 x 450 x 1730mm)
- 3,000L (2480 x 800 x 2140mm)
- 5,000L (3340 x 1060 x 2100mm)



Squat Round Water Tank

- 10,000L capacity
- 10 year guarantee
- Ø3.1m x 1.7m height
- Variety of colours
- Ideal for larger properties



Expandable Pillow Tanks

- 10,000L or 20,000L capacities
- Thermoplastic polyurethane
- Puncture/abrasion resistant

- 10,000L (5000 x 4000mm)
- 20,000L (6000 x 5000mm)

SEPTIC TANKS

Three chamber, baffled septic tanks, designed for pump out or absorption trench (not included).



1500L Septic Tank

- 2010 x 1080 x 1040mm (length x width x height)
- Clamshell design, molded using polypropylene and polyethylene
- Observation holes
- Assembly components included



2500L Septic Tank

- 2750 x 1210 x 1180mm (length x width x height)
- Clamshell design, molded using polypropylene and polyethylene
- Observation holes
- Assembly components included

5. OPTIONS (CONTINUED)

We can supply a range of options for your container home from air conditioning to solar systems for off-grid applications. Each is an optional extra and is not included in the standard price of the container home.

* We offer these as supply only, installation is not included. Items may be able to be shipped inside your container unit; for bulky items, extra shipping charges may apply.

FURNITURE

For dining/living areas and bedrooms.



Master Bed Head & Frame

- 148 x 197cm size (larger than double size of 138 x 188cm)
- White timber finish
- Mattress sold separately



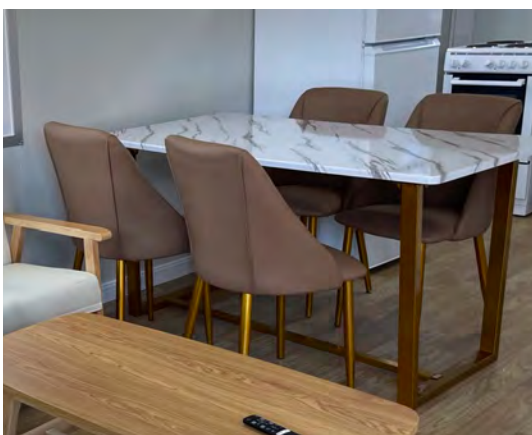
Single Bed Head & Frame

- 98 x 197cm size
- White timber finish
- Mattress sold separately



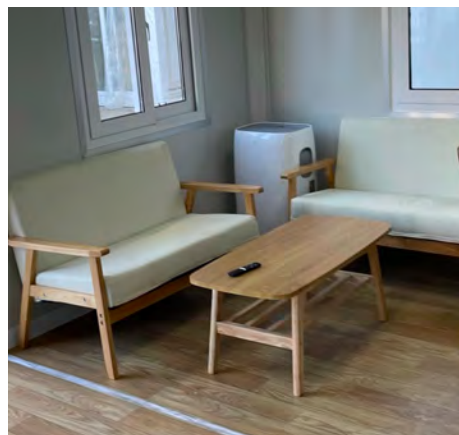
Wardrobe & Storage

- 800 x 2000 x 400mm
- Plywood & melamine built
- Coat hanging rail
- Pigeon holes storage section



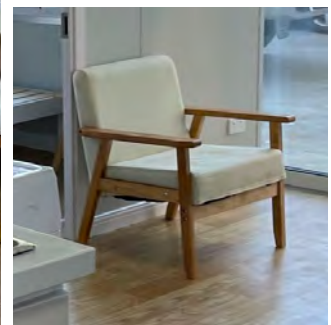
Dining Area Set

- Dining Table and 4 Chairs
- Cushioned chairs
- Marble pattern table
- Metal legs



Living Area Set

- 2 x Double Sofa Seat
- Matching Coffee Table
- 1 x Single Sofa Seat



5. OPTIONS (CONTINUED)

We can supply a range of options for your container home from air conditioning to solar systems for off-grid applications. Each is an optional extra and is not included in the standard price of the container home.

* We offer these as supply only, installation is not included. Items may be able to be shipped inside your container unit; for bulky items, extra shipping charges may apply.

SOLAR & BATTERY STORAGE SYSTEMS

For homes deployed in areas without electrical services, we can provide off-grid solar & battery systems.



16 x LG NeON H 380W Professional Solar Panels

- Builds 6kW solar panel array
- Suited for Australia & NZ climates
- Up to 20.9% module efficiency
- Excellent low light performance
- Improved high temp performance
- Increased power generation and reduced power loss with LG N-type cell technology
- Hail resistant panels
- 25 year warranty



Huawei Inverter & 10kWh Battery Storage System

- 10kWh battery storage system
- 2 x 5kWh battery modules
- Hybrid 5kW single phase inverter with WiFi reporting / app control
- Single phase backup module
- Single phase power sensor
- 100% depth of discharge
- Scalable up to 30kWh
- Lithium iron phosphate (LFP) battery cell technology



Complete Mounting System

- Rail system for mounting and securing panels to container unit
- Cables for connecting panels together and for termination to battery/inverter system
- System cable connectors
- Isolators and stainless steel isolator covers for installation

