



2022

EXPANDABLE CONTAINER UNITS

VIOLET SERIES BROCHURE

For more information, call (02) 4545 2599 or visit online at www.hometechnologyclub.com.au

WHO ARE WE?

Home Technology Club (HTC) specialises in transportable rapid-deployment buildings, sustainable technologies and home appliances at affordable prices.

It is our mission to solve the problem of the lack of affordable housing in Australia and the VIOLET Series of container units is our solution to this problem. Available in 20ft, 30ft or 40ft models, the VIOLET Series offers pre-fabricated home solutions that enable you to live just about anywhere.

We have curated a range of accompanying appliances and technologies to enhance the freedom offered by the VIOLET Series. We offer complete solar systems with batteries and solar panels, water storage solutions for all types of locations, efficient heat pump hot water systems, affordable septic tanks, air-conditioning and more.

Home Tehcnology Club's is a Cornick Pty Ltd company. Cornick is a family business established in 1978 with over 44 years of successful business trading.

Let us showcase the benefits of the VIOLET Series, work out your home needs, and find a solution that is right for you - contact HTC today.



Frank Ferrara

Founder of Home Technology Club

Distribution Centre Mulgrave NSW



CALL US:
(02) 4545 2599

Demonstration Units

8 Precision Place

Mulgrave NSW



VIOLET 20ft unit with pitched roof & patio, self sustainable with solar and battery system, water tank, hot water and septic tank



Also at
577 Woodville Road
Guildford NSW

Enquiry Process

VIOLET Series



The first step is to consult with you to find the right VIOLET container unit for you. Contact us by phone, submit your enquiry online or schedule a visit to one of our demonstration units at Mulgrave (Mon-Fri 9am-5pm) or Guildford (Mon-Fri 9am-5pm and Sat (9am-12pm)).

1. UNDERSTANDING YOUR NEEDS

Contact us in person, over the phone or online and we will discuss:

- Prospective site location and access
- Desired schedule for purchase/delivery
- Possible unit transportation options
- Any questions regarding VIOLET units

We will also provide our **Free Quotation Form** that will make receiving a quotation quick and easy.

3. VIOLET SITE PREPARATION

After reserving your unit, you can begin work on building the footings/piers using our footings guide in this brochure.

Once footings are complete, arrangements for balance payment and transportation to site can be made.

If within NSW, we can recommend freight providers. Outside of NSW, we have the facility to deliver direct to port or ship from one of our other holding facilities.

2. RESERVING A VIOLET UNIT

After receiving your quotation form, we will generate a quote for you. If you approve of the quotation, we request 20% deposit of the total cost to reserve an incoming standard design unit, or to put a custom unit into production.

Standard units arrive frequently whereas custom designs can take 12~16 weeks to produce and ship from our manufacturer.

4. DELIVERY OF YOUR VIOLET UNIT

Upon balance payment and freight payment, we will work to coordinate a shipment date that suits you best. We will load onto the chosen transport from our distribution centre in Mulgrave NSW.

Once arrived at your site, you may require additional cranes to lift-off from the truck or lift over obstacles.

Once placed, you can begin expansion of your VIOLET unit. We do not provide installation.

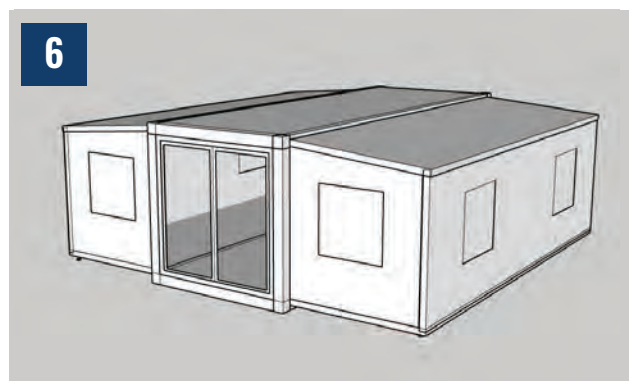
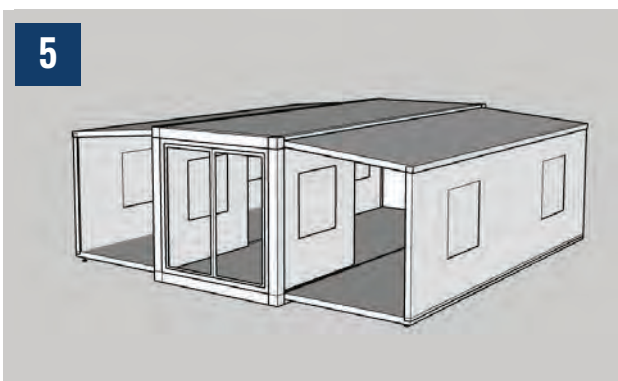
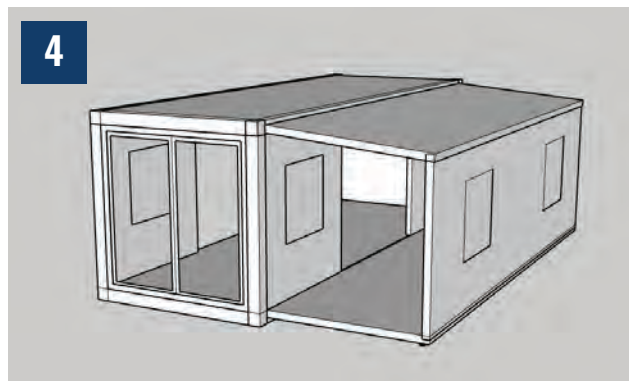
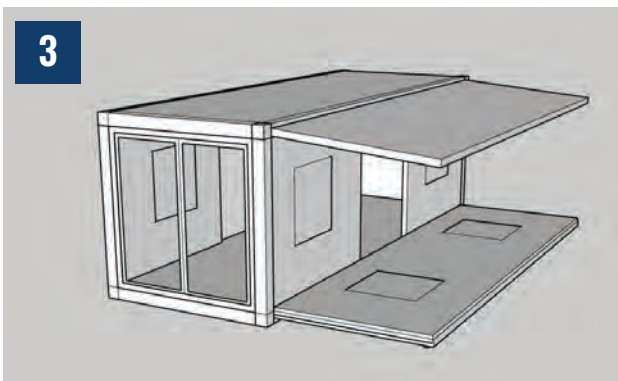
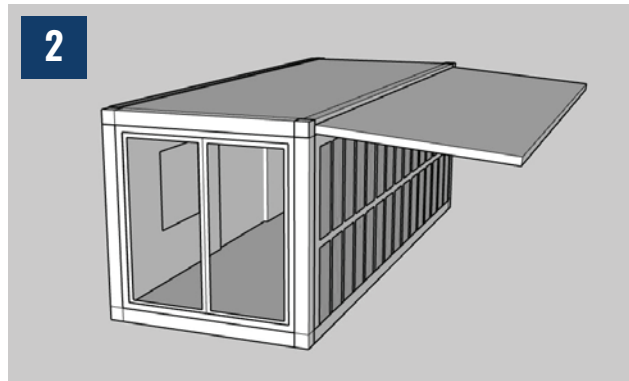
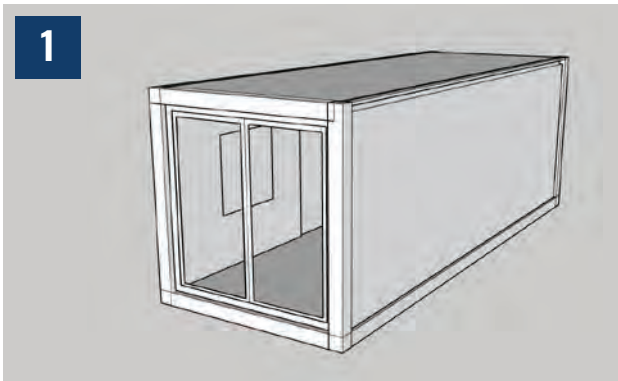
Product Overview

VIOLET Series



VIOLET Series container units are not your standard container unit. Each unit is built from the ground up unlike others that are constructed using pre-loved shipping containers. They are designed to fit into 40ft high-cube shipping containers for easy transportation.

Once delivered and unpacked, the unit is placed on footings and can be expanded out to full size. This is performed by its hinged design that enables folding-out of the ceiling, floor and walls, effectively tripling its floor space.





VIOLET 20ft Expandable (front)



VIOLET 20ft Expandable (rear)

Standard Inclusions

VIOLET Series



Our standard design for VIOLET Series container units offers a fantastic base configuration that we're sure will fit your requirements and leave room for you to make the unit your own. Please see the standard inclusions for all* expandable VIOLET container home models (20ft, 30ft, 40ft).

EXTERIOR & CONSTRUCTION

Heavy duty galvanised steel forms the frame of the VIOLET Series container units, with the walls and ceilings constructed from EPS (expanded polystyrene) sandwich panels. This is the same sandwich panel commonly used in cool rooms, offering superior insulation.

- Heavy duty galvanised steel frame for robust walls, floor and ceiling
- 75mm expanded polystyrene (EPS), galvanised steel sandwich panel walls/ceiling
- 18mm fibre cement board base, pre-fitted to steel frame, sub-floor material

FLOORING & TRIM

Each VIOLET Series container unit comes standard with pre-laid PVC flooring.

- PVC flooring (grey colour as standard), pre-fitted to fibre cement board base layer
- Ceiling and floor skirting board trim and corner trim with capping pieces

WINDOWS & DOORS

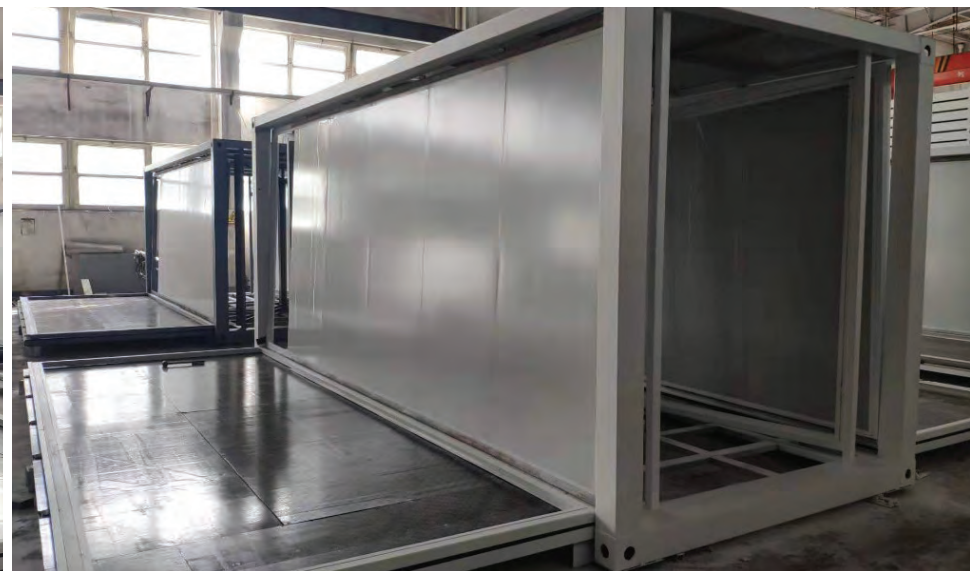
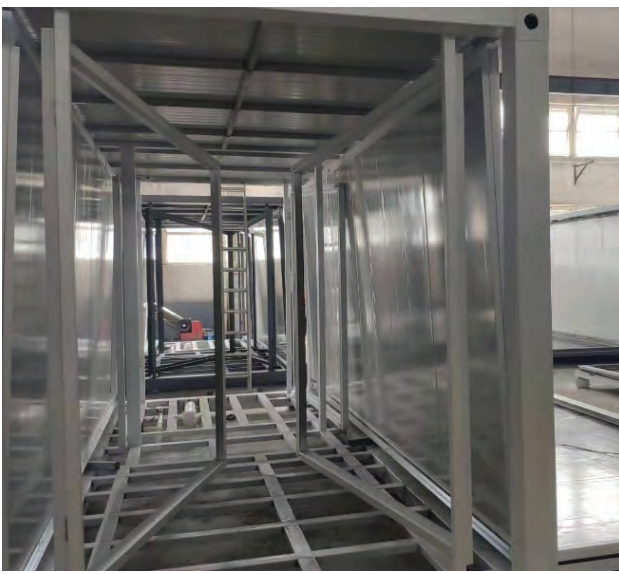
Glass windows and exterior glass doors are double glazed for improved insulation and sound deadening. Interior and exterior doors are included (excludes additional sliding doors).

- Double glazed tempered glass sliding front door with lock and pull handle
- White aluminium window frame comes pre-installed and pre-fitted with windows
- Double glazed tempered glass windows with latch kit and window flyscreen
- Interior bedroom and bathroom doors with pre-fitted door locks and door handles

* Minor design changes to standard inclusions may not be represented in the list below. Also excludes custom designs. Please contact your HTC sales representative for the latest information.



VIOLET 20ft Exterior Construction



VIOLET Series Standard Windows

Standard Inclusions

VIOLET Series



KITCHEN

The kitchen for VIOLET Series container units are included as standard, but require assembly as they are partially assembled for shipping. The characteristic L-shape kitchen offers plenty of benchtop space and additional room and electrical for a refrigerator and oven/cooktop.

- Premium L-shape floor-mounted kitchen cabinets in white with cupboards and drawers with kickplate and door handles included
- Wall-mounted kitchen cupboards for additional kitchen storage
- Easy-hang kitchen cabinet mounting points on kitchen wall
- Man-made stone benchtop with splashback trim for kitchen cabinets
- Pre-cut sink space, stainless steel two-compartment sink with kitchen mixer tap

BATHROOM

VIOLET Series container units come standard with their bathroom almost complete pre-fitted. This means once water and power are connected to your unit, you have a fully functional bathroom ready to be used.

- Premium shower with mixer tap, bath tap, hand shower head and rainfall shower head
- Premium sliding glass shower door with pre-fitted frame; shower window for ventilation and pull-down window screen; pre-fitted shower drain tray
- White ceramic toilet, pre-fitted and ready for connection
- Washer-basin with mixer tap designed to fit compact washing machine under basin
- Space and inlet/outlet for washing machine (fits 620 x 850 x 600mm)
- Deluxe mirror vanity cupboard, pre-fitted and ready for use (830 x 700 x 140mm)
- Grey marble pattern bathroom tiles

VIOLET Series Kitchen

Wall and floor cabinets with stone countertop, kitchen sink and mixer tap, dedicated electrical for fridge and oven/stove



VIOLET Series Bathroom

Sliding glass door rainfall shower with drain tray, toilet, washer-basin to fit compact washing machine, and mirror cabinet - all standard and pre-installed



Standard Inclusions

VIOLET Series



BEDROOMS

Bedroom size and quantity available with VIOLET Series container units is determined by the size of the container unit. Each bedroom comes standard with an interior door with lock and at least one window. Bedrooms are fitted on the east side of the container unit, but this can be rearranged as a customisation, depending on your site layout. Bedrooms are created by splitting the room by fitting a partition wall.

- 20ft (36m²) VIOLET - standard design features 2 bedrooms, one large, one small
- 30ft (54m²) VIOLET - standard design features 3 bedrooms, one large, two small
- 40ft (72m²) VIOLET - standard design features 3 bedrooms, three large

ELECTRICAL

VIOLET Series container units come pre-wired and have power outlets pre-fitted. Light switches are installed and power is fitted in bedrooms, bathroom, kitchen and living area. There is also dedicated power for kitchen appliances, electric hot water and air conditioning. By virtue of the expandable design, all power stems from the centre section of each unit.

- Australian standards approved electrical cabling, power points, switches & power box
- Up to two power outlets in bedroom (two in larger rooms, one in smaller rooms)
- Dedicated kitchen power on benchtop and hidden in cupboards for appliances
- Bathroom power near the basin and for the washing machine underneath
- 50A rear input with included waterproof connector
- Round LED oyster for each room with pre-fitted light switches

PLUMBING

Like electrical, inlet and outlet plumbing also comes pre-fitted in VIOLET Series container units. There are separate drain pipes for waste water and grey water. Also similar to electrical, plumbing and therefore water supply stems from the centre section of each unit.

- Plumbing fittings, taps, shower and other fixtures have WaterMark certification
- Plumbed hot / cold water inlets for connecting water supply and hot water system
- Grey water and waste water outlets at the rear of the container unit
- Interior plumbing pre-fitted for kitchen sink, bathroom basin, toilet & shower

In our standard design, bedrooms are in the east section of the unit. The large bedroom sizes (detailed left page) fits a queen bed and the small bedroom fits a king single (shown below).

VIOLET Series Large Bedroom



VIOLET Series Small Bedroom

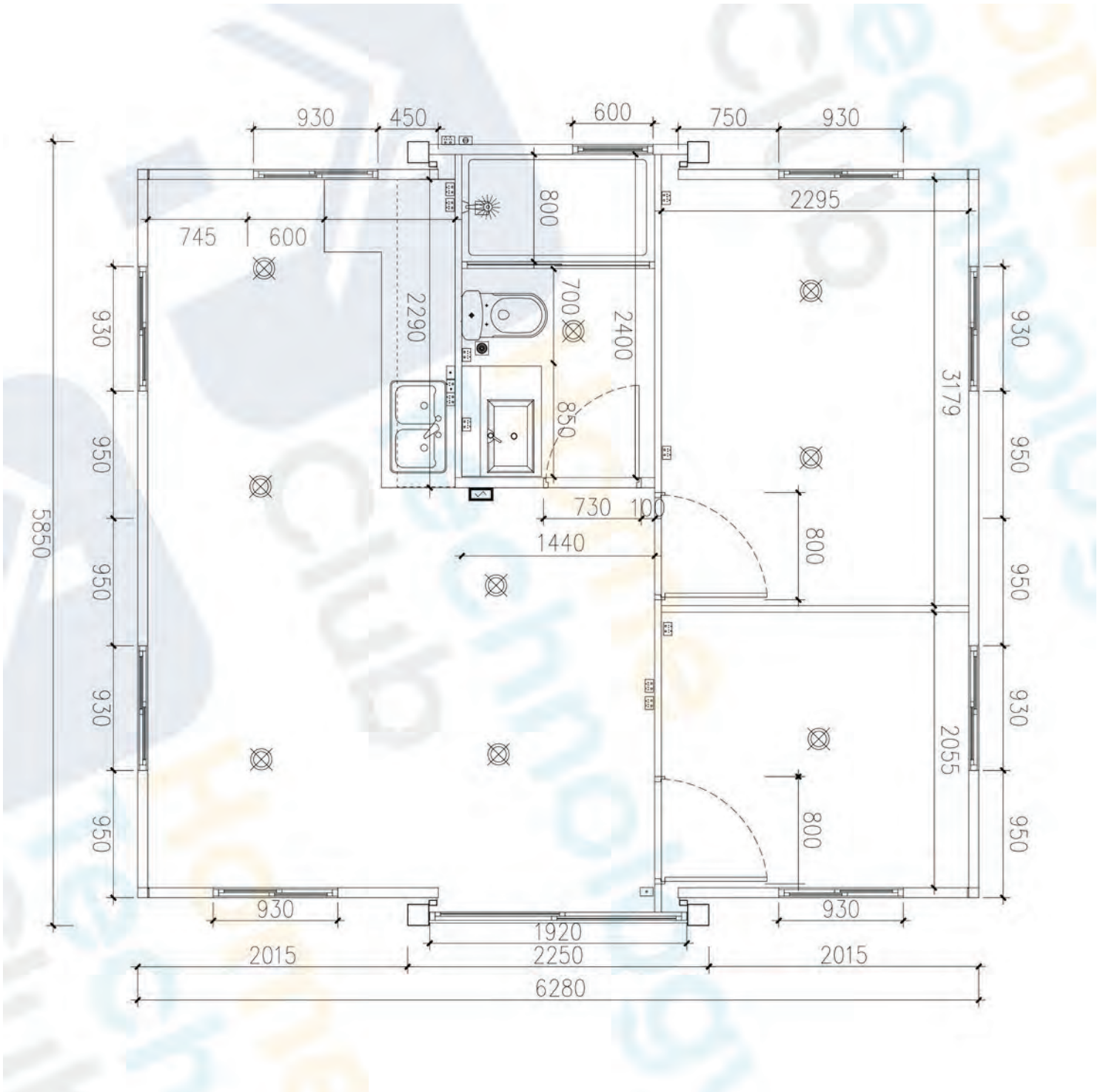


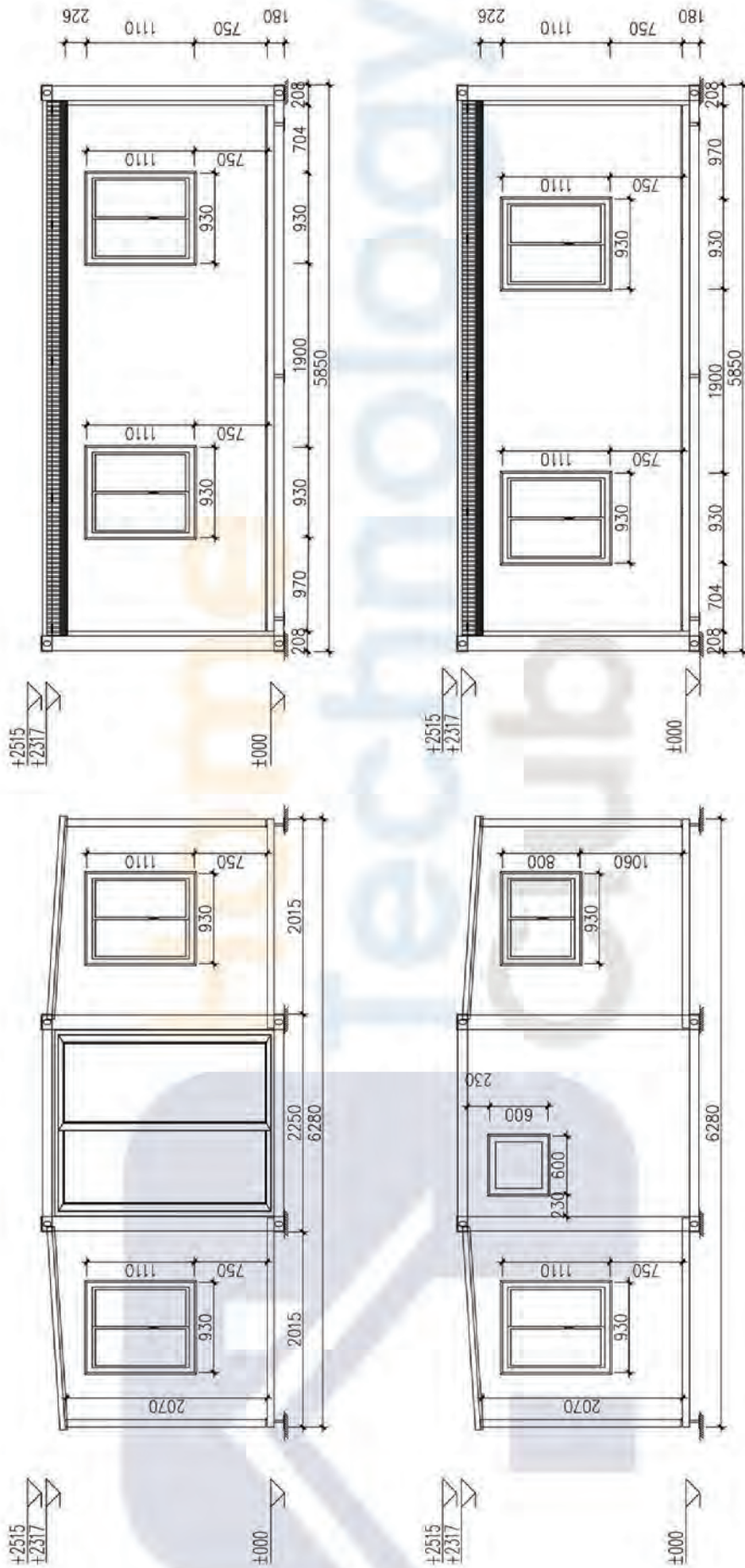
20ft Standard Design


VIOLET Series



The VIOLET Series 20ft expandable unit standard design features 2 bedrooms, separated by a partition wall added during installation. Alternatively, by leaving out the partition wall, this can be left as one single large bedroom.





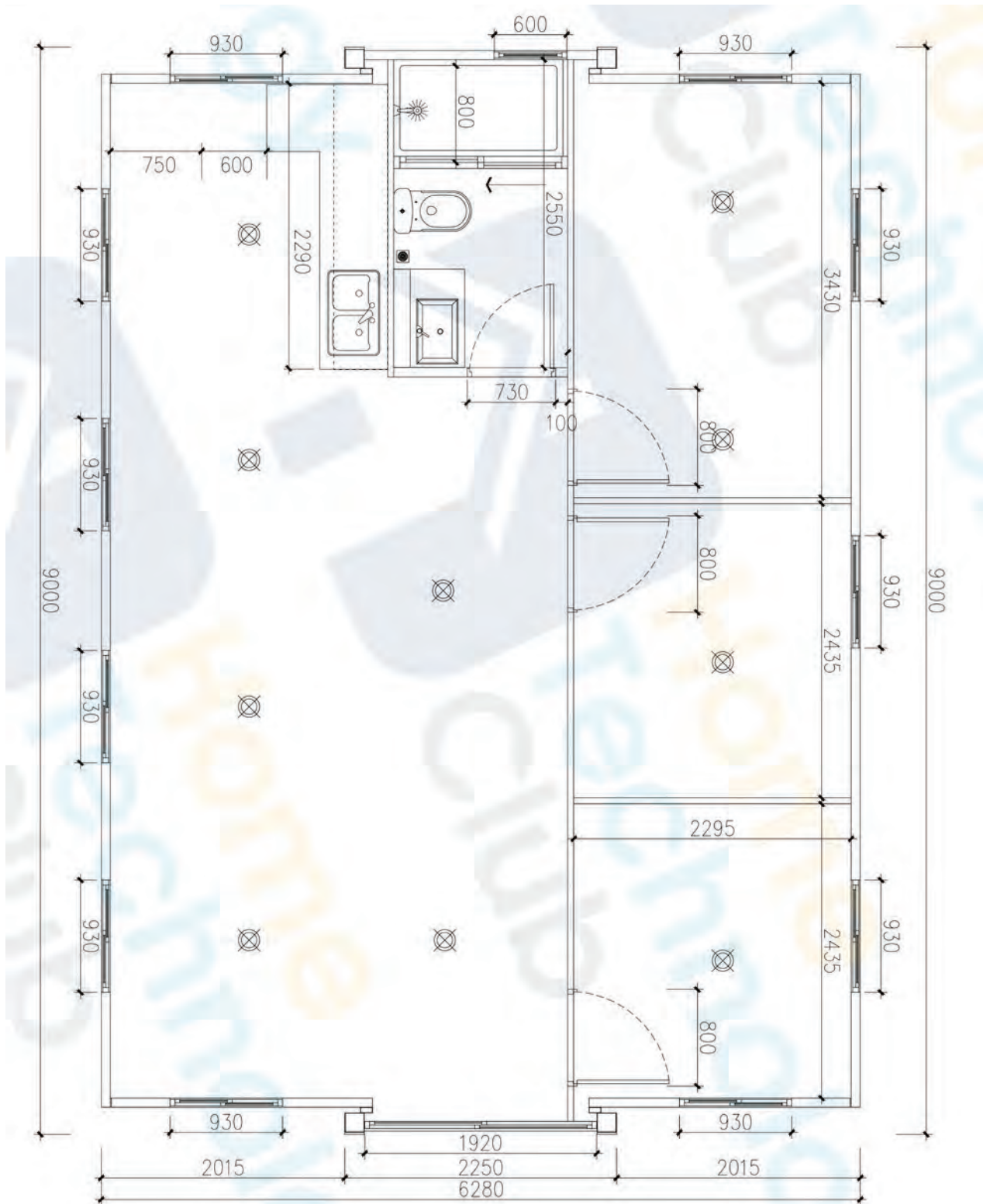
TITLE	VIOLET20 EXTERIOR
DATE	01-2022
	

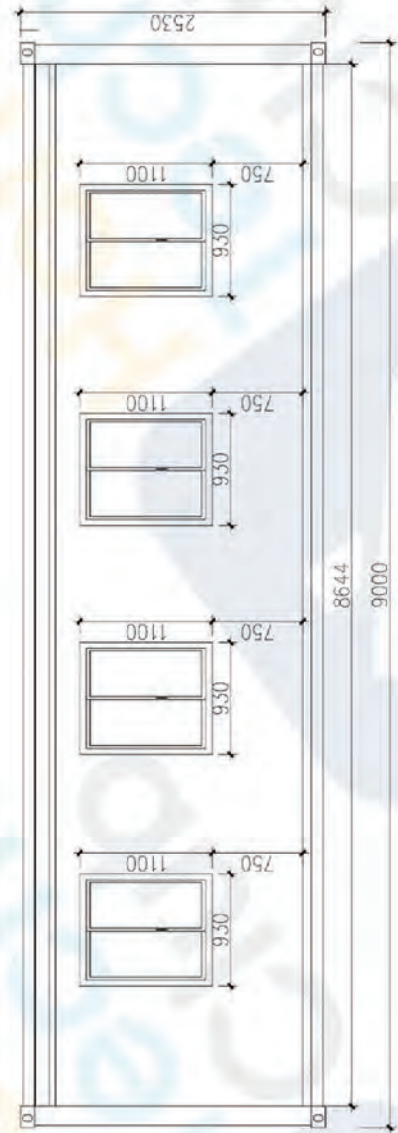
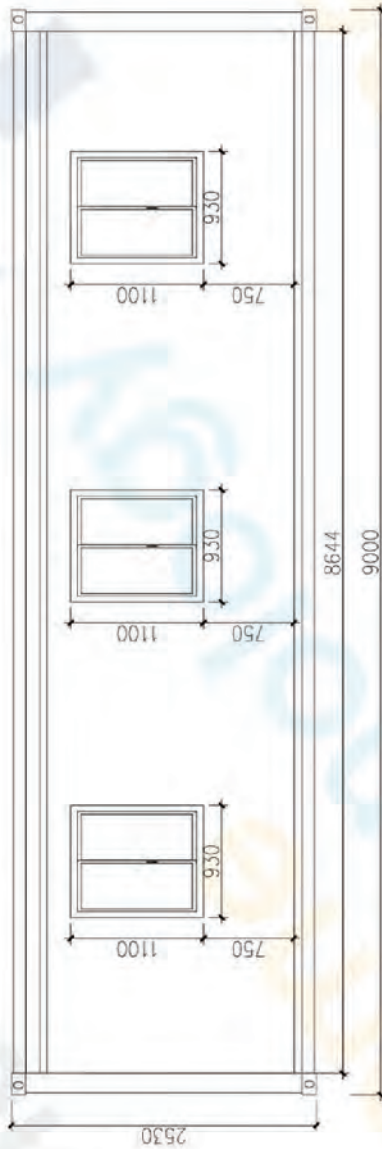
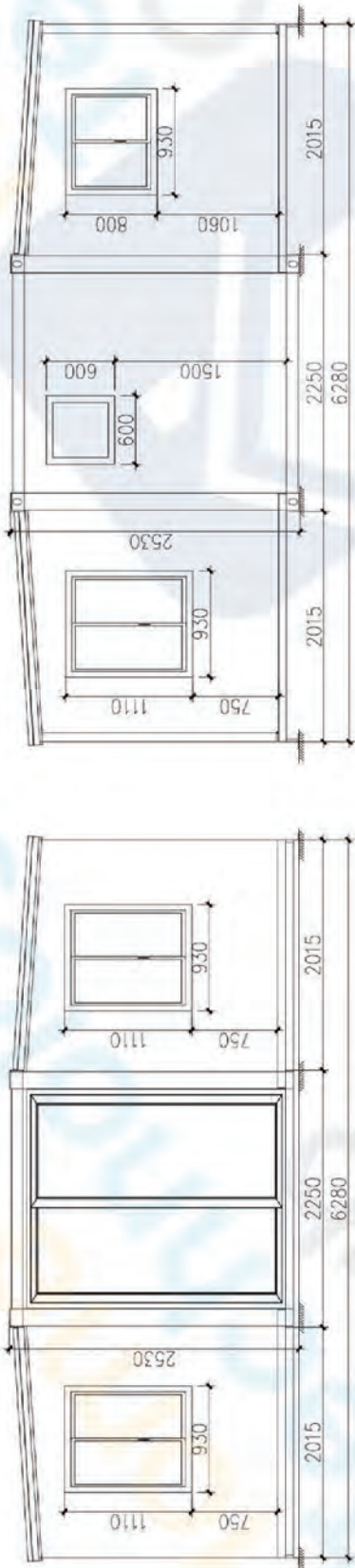
30ft Standard Design

VIOLET Series



The VIOLET Series 30ft expandable unit standard design features 3 bedrooms (1 large, 2 small), separated by partition walls added during installation. *We currently do not hold stock of the 30ft unit, available by special order only.





TITLE	VIOLET30 EXTERIOR
DATE	01-2022

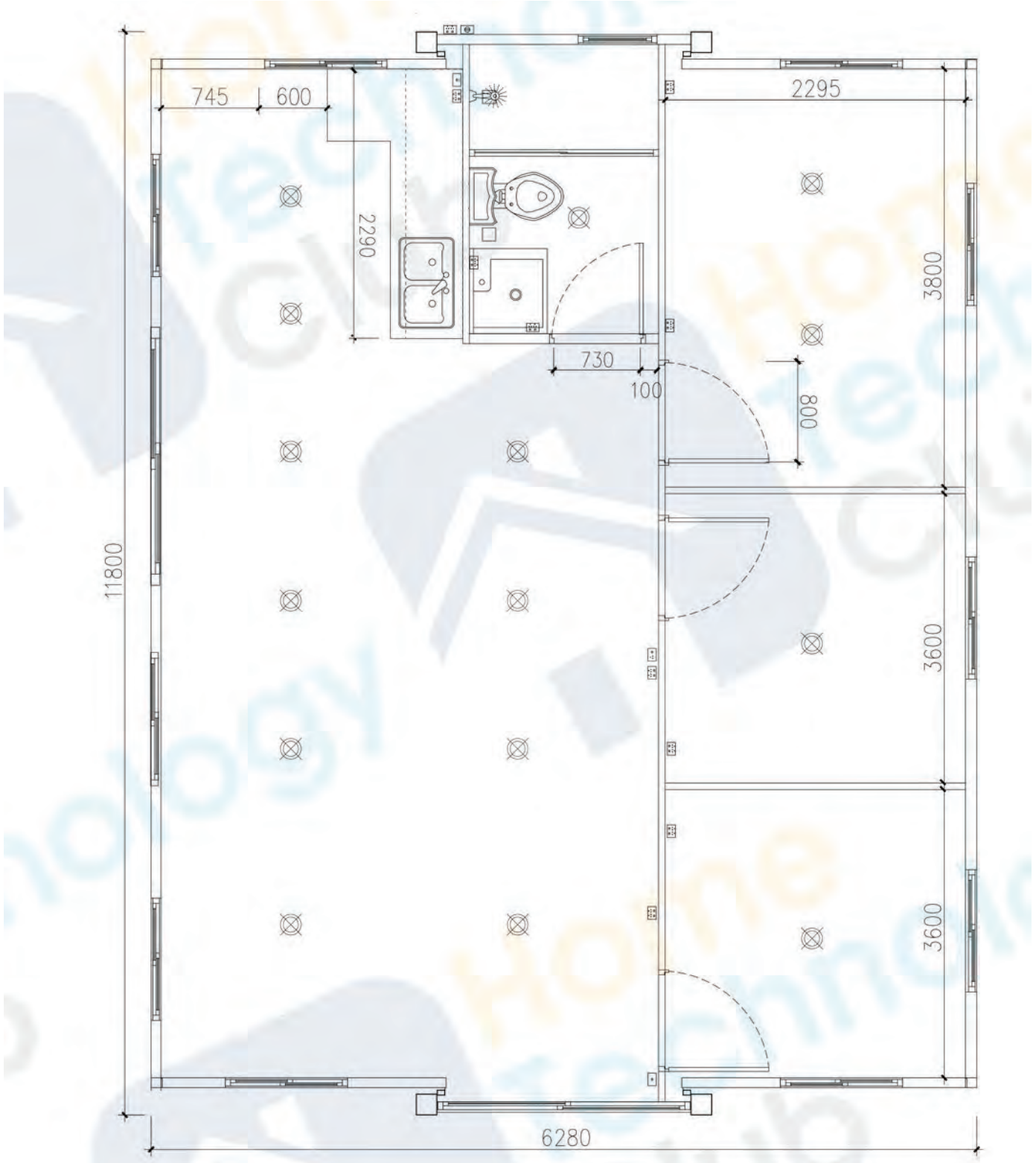


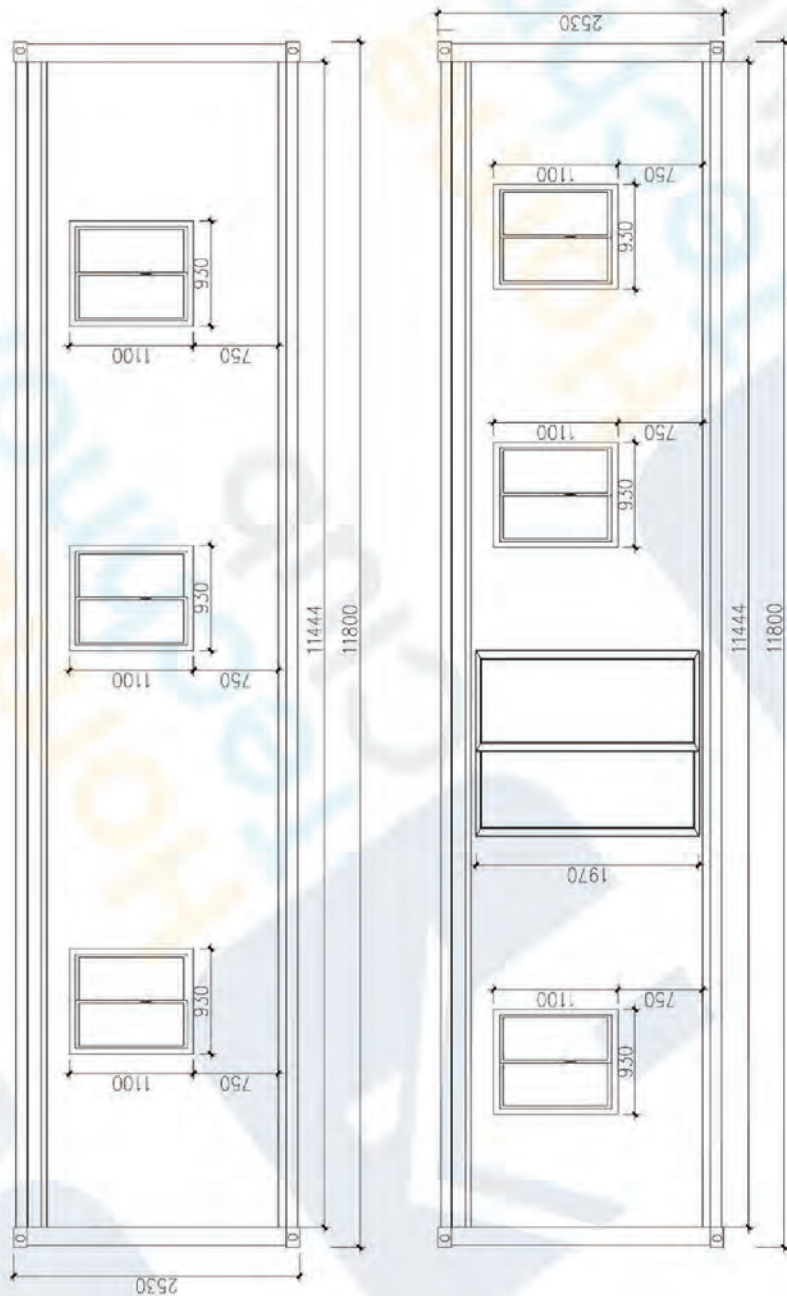
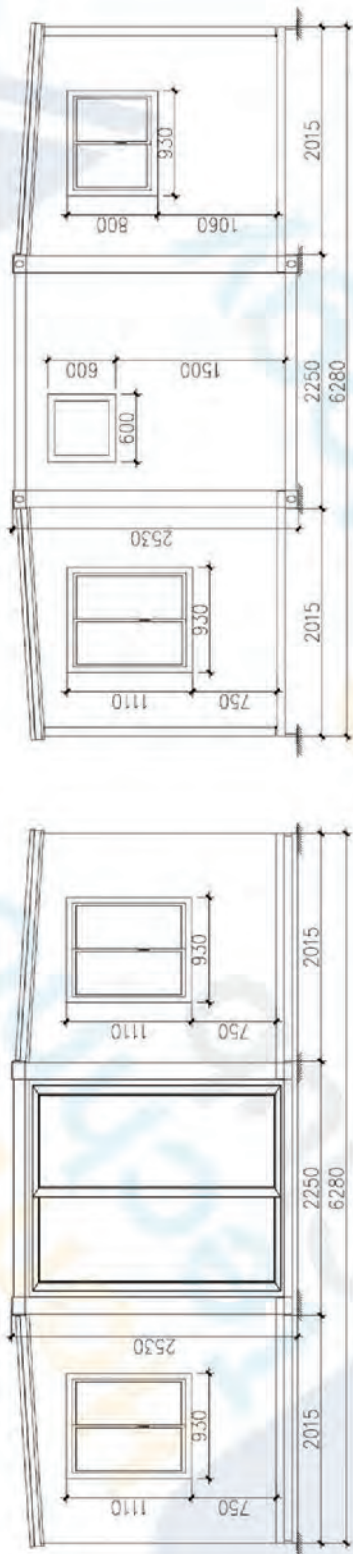
40ft Standard Design

VIOLET Series



The VIOLET Series 40ft expandable unit standard design features 3 large size bedrooms, separated by partition walls added during installation. An additional sliding glass door is included alongside the kitchen in the standard design of the VIOLET Series 40ft unit.





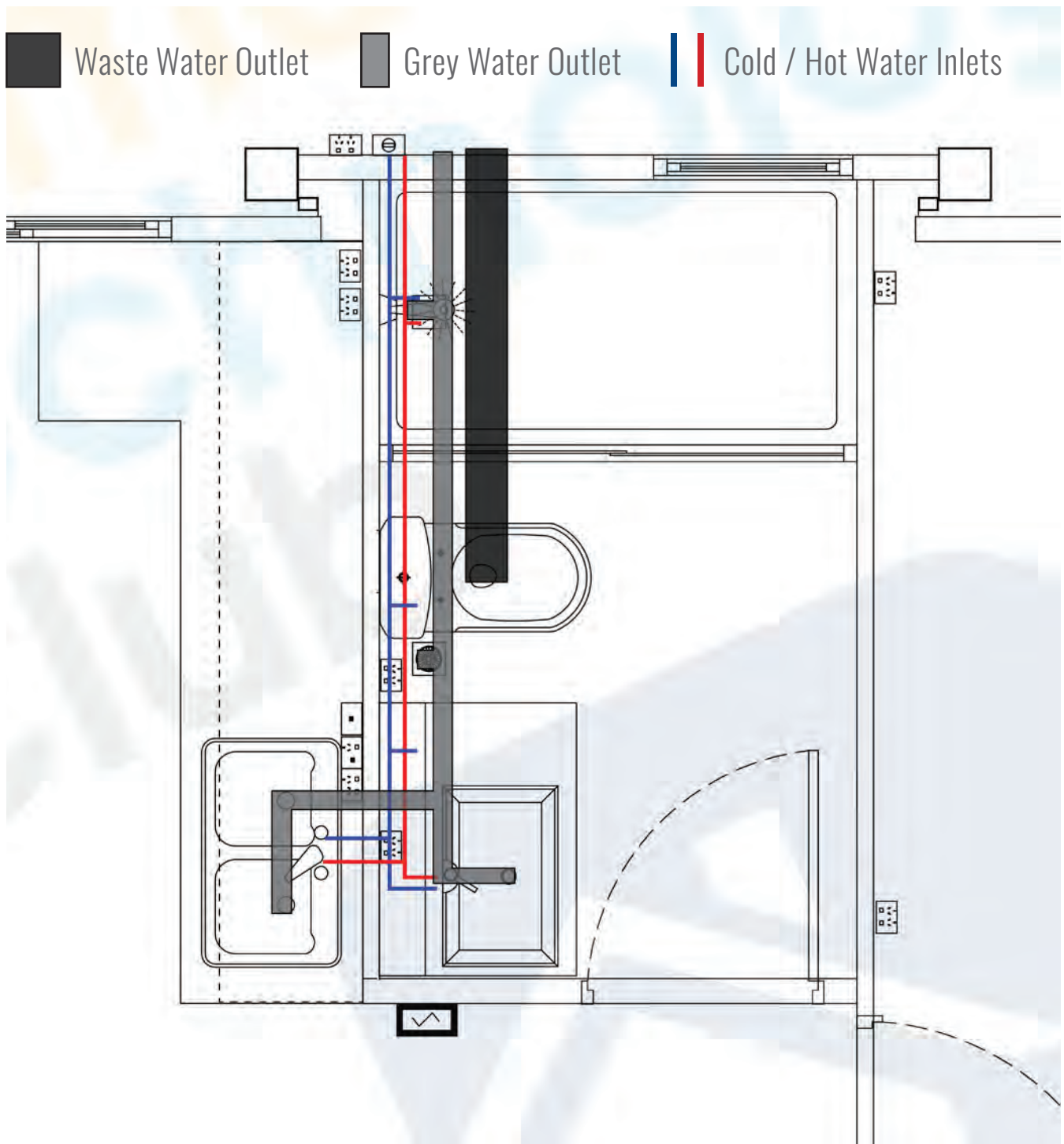
TITLE	VIOLET40 EXTERIOR
DATE	03-2022
	

Plumbing Details

VIOLET Series



The plumbing layout shared by each unit in the VIOLET Series features separate waste water and grey water outlets. Hot and cold water inlets are pre-fitted and there is facility to connect cold water to the washing machine in the washer-basin. We recommend using a licensed plumber to connect to water supply, hot water system and sewage system.



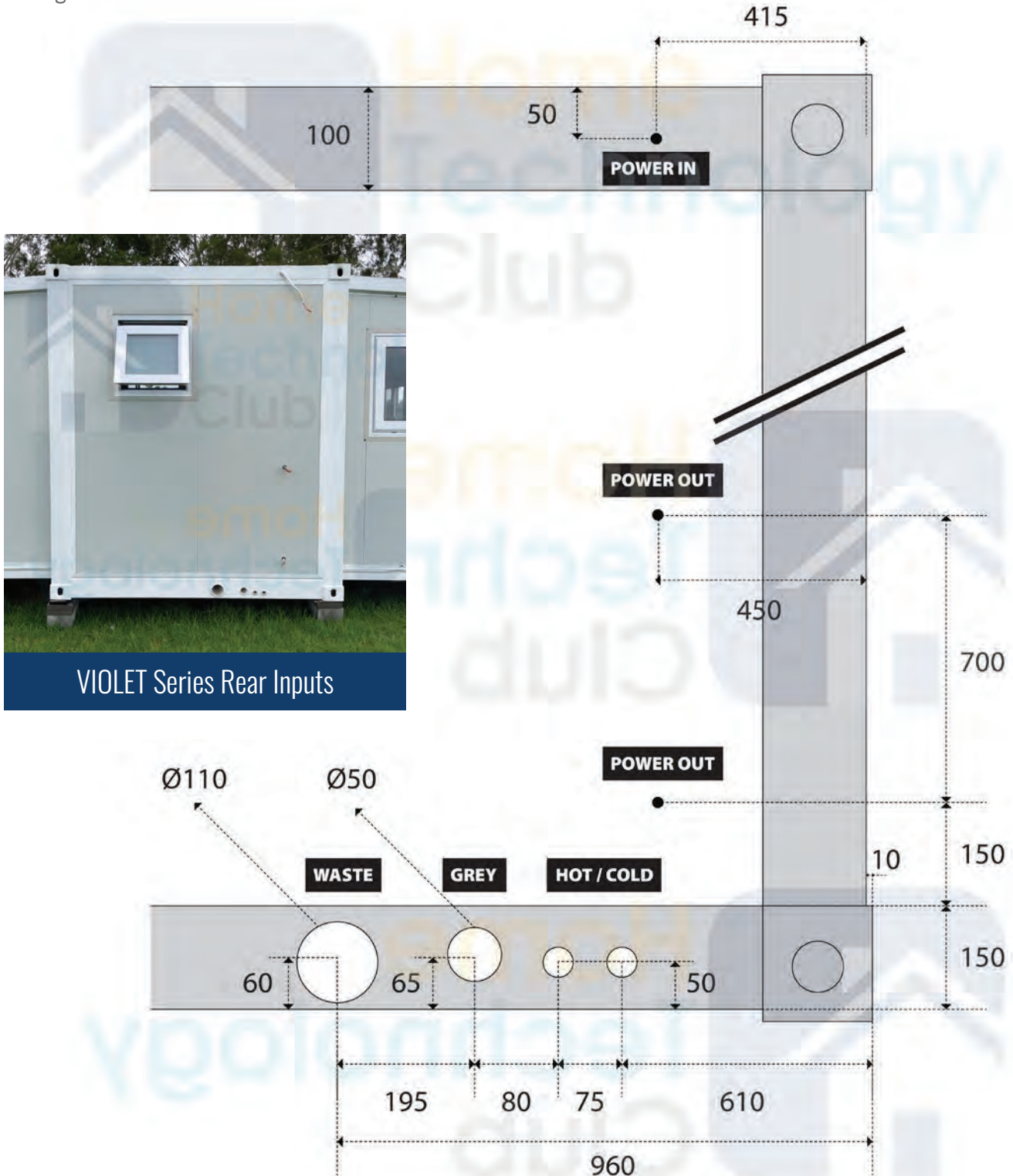
Utility Connections

VIOLET Series



VIOLET Series container units feature 50A power input at the rear with separate exterior outlets for hot water and air conditioning systems (requires wiring by electrician). Plumbing inlets and drain outlets are also at the rear of VIOLET Series units.

Drawing units are in mm. Not to scale.



VIOLET Series Rear Inputs

Footings Diagrams

VIOLET Series



To support the main centre section and expanded east/west sections of the unit, VIOLET Series container units are to be placed on footings or concrete piers. It is crucial that the site is level as it can affect the effectiveness of the weather sealing measures of the container unit.


The diagram on the opposite page details footing locations for both screw-in options and footings-only options. Below shows two types of 'footings-only' options, one with besser block arrange and another with house stumps on a concrete pier.

30ft and 40ft VIOLET Series footings diagrams are similar and available by request.



Concreted-in besser blocks and house stumps on concrete piers

GUIDE FOR USE - FOOTINGS ONLY

 Denotes footing centres


Footings are based on 2 x 1 besser blocks, approx 390x390mm (L x W)


Make CENTRE SECTION footings level

Make EAST and WEST SECTION footings 100mm higher than CENTRE SECTION footings

Where necessary, shim the footings with thin, durable material to precisely level the container unit

GUIDE FOR USE - SCREW-IN FEET

 Denotes screw-in feet locations


 Denotes footing centres

Make CENTRE SECTION footings level

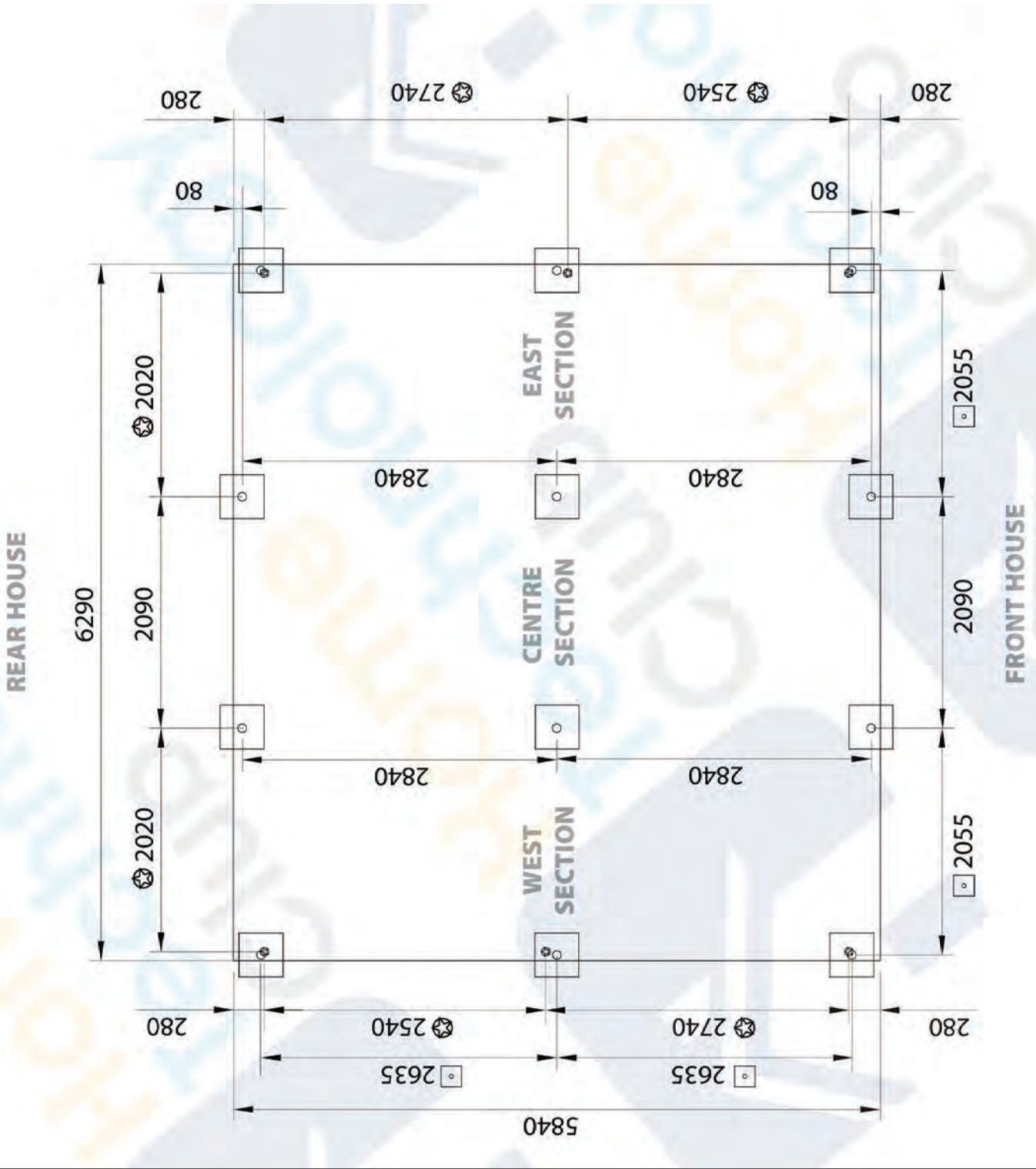
Build EAST and WEST SECTION footings to the same height as CENTRE SECTION footings

Add screw in feet to make precise level

* Supplied screw-in feet may need to be cut to length. DO NOT over-tighten screw-in feet. Example feet below.



TITLE	VIOLET20 FOOTINGS
DATE	Q3-2022
	



Unit Transportation

VIOLET Series



We'll help organise transport to your site, wherever you're located in Australia. You can also choose to organise your own transportation for your container unit. Delivery to your site is not included in the base price of the unit and is arranged after your unit has arrived to our NSW warehouse or holding facilities.

SHIPPING WITHIN NSW

We are based in Western Sydney and are capable of organising transport to anywhere in New South Wales (see modes of transport on opposite page). Delivery can take 1~2 days depending on the third-party transport chosen and distance to the delivery site.

SHIPPING TO NEAREST PORT

We are capable of transporting all over Australia. However, depending on the location, it may be more economical for you to receive the unit directly from your nearest port (Western Australia, South Australia, Northern Territory, Tasmania, Far-north Queensland).

There are additional costs and delivery time depending on the port chosen and special arrangements must be made for a bespoke shipment to your port. It is also crucial to know that VIOLET 20ft units must be shipped two at a time; they cannot be shipped as single units.

We are steadily improving availability at holding facilities across Australia to be able to deliver your container unit at the best price possible.

ACCESS TO YOUR SITE

VIOLET Series container units are heavy (4500kg for 20ft unit) and so too are the heavy haulage vehicles that transport them. It is essential that there is sufficient access to the site and that any obstacles are known ahead of time to prevent increased transport costs and delays. Large vehicles will get bogged in loose or wet surfaces. Consider the following for your site and the vehicles that will be required to access your deployment location:

- Vehicle weight limit up to 10~25t
- Vehicle height access up to 4m
- Vehicle footprint up to 8m x 13m
- Access for franna crane if required
- Sealed road surface for heavy truck access
- Road width is suitable for large vehicles
- No obstructions; trees, powerlines, etc.
- Bad weather will postpone delivery

MODES OF TRANSPORT + LIFT-ON/OFF



Tilt Tray Truck

- Truck with a winch drags unit on/off
- Economic; suitable for placing on slab
- Cannot place unit on footings
- May damage the unit or contents when winching on/off the bed of the tray



Crane Truck / Hiab (up to 25t)

- Transports and lift-on/off + placement
- Requires large hiab as unit is heavy, standard crane trucks are unsuitable
- Unable to travel far outside metro areas without incurring great expense



Flatbed Truck / Truck & Trailer

- We load the flatbed at our warehouse
- Requires separate crane for lift-off
- Can ship additional pallets / accessories
- Most economic for long distances
- Truck and trailer required for shipping multiple 20ft units; long bed for 40ft units



Franna Crane / Fixed Crane

- For pickup and place unit on footings
- Recommend 10t ~ 15t franna crane for 20ft unit, larger cranes for 40ft unit
- Large cranes are required for lifting the heavy units over long distances

Installation Overview

VIOLET Series



Installation of a VIOLET Series container unit requires a number of steps. Many key parts of the unit are complete out of the box and the expansion stage can be performed within 1~2 days. However, building footings, making the unit level, weather sealing, interior fitout and connecting to services can take additional time and requires professionals to be brought on board.

Home Technology Club currently does not include installation services for the VIOLET Series container units but we provide a full installation guide to assist with the expansion and fitout of your container unit.

Installation can be broken down into 4 main processes - site preparation, expansion and sealing, interior fitout and connection to facilities.

You may consider hiring a professional to handle the entire installation process of your unit. We may be able to recommend installation professionals in NSW, dependent on your location.

INSTALLATION OVERVIEW

1. Site preparation, footings construction; make level is very important for smooth install
2. Delivery and placement of VIOLET unit; remove interior & install components from inside
3. Expand each side of the container unit, raising the ceiling then lowering the floor/wall of east and west sections onto the footings (requires 4~5 people). Open up shorter north and south walls to enclose the unit on each side
4. Apply weather-sealing rubber tapes to ceiling, wall and floor connection points
5. Fasten roof and walls together with provided materials and fit partition walls for bedrooms
6. Finish interior edges; fit trim to skirting and cornices; fit floor trim and ceiling trim
7. Fitout kitchen interior using pre-built cabinets & wall cabinets, mount counter top, fit sink and silicon edges. Fit interior lighting, screw-in LED oyster lights
8. Connection to electrical, terminate main power input, air conditioning/hot water outlets; connection to plumbing; hot/cold water supply, grey water and waste/septic system





Come and inspect one of our display homes today

8 Precision Place
Mulgrave, NSW 2756

577 Woodville Road
Guildford, NSW 2161

Home Technology Club
P: (02) 4545 2599
M: 0400 843 365

Home Technology Club (HTC)
is a company of Cornick Pty Ltd.
Copyright 2022, all rights reserved HTC.